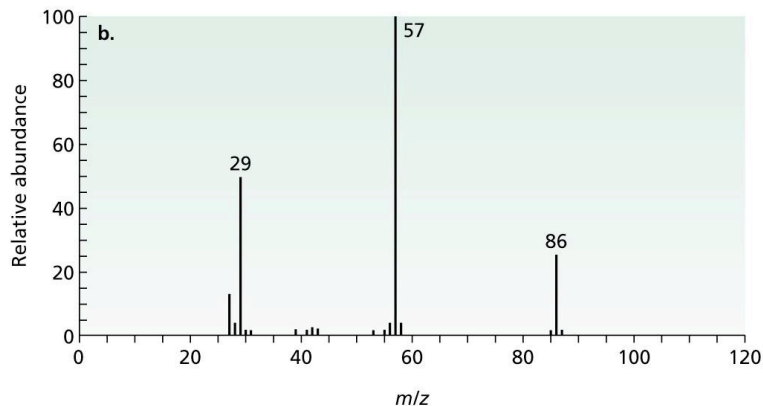


## Quiz 5: Monday Afternoon

Name:

Note: You will have 30 minutes to complete the following quiz.

- 1) The following molecule is a mass spec of pentanone ( $C_5H_{10}O$ ) (amu = 86). Use the fragments to predict which isomer of pentanone this is a mass spec of (4 points).



- 2) Show a structure for a compound that has the molecular formula  $C_9H_{12}$  consistent with the following NMR. (6 points)

